



#### **GUEST CONTROL SYSTEMS LIMITED**

Room 1213, 12/F., Tower A, Hunghom Commercial Centre,  
39 Ma Tau Wai Road, Hunghom, Kowloon. Hong kong

[www.guestcontrol.net](http://www.guestcontrol.net)

GCS-V1-EM-8-2023

For more information, please contact:  
[guestcontrol.systems@yahoo.com](mailto:guestcontrol.systems@yahoo.com)

Hong Kong · Guangzhou · Shanghai · Beijing · London · NewYork



## **Next Generation Wi-Fi for Vertical Industries**

Closing the Latency Gap to Achieve Real-time  
Wireless Communication.....

Wi-Fi connectivity is no longer an option, it is business critical requirement.  
GuestControl™ offer a full portfolio of Wi-Fi 6 and Wi-Fi 6E technologies as it is the most recent iteration of the Wi-Fi network protocol and is a substantial upgrade over its predecessor.  
Confirming to IEEE 802.11ax standard, It is the successor of 802.11ac. It is also known as High Efficiency Wi-Fi, for the overall improvements to Wi-Fi 6 clients in dense environments.  
GuestControl™ Wi-Fi solution is built and designed using an innovative distributed intelligence architecture to make the Wi-Fi network smarter, more resilient and less demanding to configure and deploy.



WiFi 6+

## CONTENTS.

04	INTRODUCTION
05	ENTERPRISE WI-FI
11	INDUSTRIAL WI-FI
17	INDUSTRIAL EXPLOSION PROOF WI-FI
25	WI-FI NETWORK CONFIGURATION
27	COMPARING WI-FI 5 AND WI-FI 6 STANDARDS
29	PERFECT TIME TO IMPLEMENT WI-FI 6 NOW
32	ABOUT US
33	CUSTOMIZATION SERVICES
34	OUR COMMITMENT





## INTRODUCTION

Wi-Fi is a universal wireless networking technology used to connect computers, tablets, smartphones and other devices to the internet. It utilizes radio frequencies to transfer data. Wi-Fi allows high-speed Internet connections without the use of cables.

The Institute of Electrical and Electronics Engineers (IEEE) created the standard for Wi-Fi technology that all wireless routers follow, 802.11. The 802.11 standard applies to several specifications of WLANs and defines an over-the-air interface between a wireless client and a base station or between two wireless clients. The five commonly used Wi-Fi technologies up to today are A, B, G, N and AC. B and G use the 2.4 GHz frequency; A and AC use the 5 GHz frequency; and N uses both 2.4 and 5 GHz frequencies.

**Wi-Fi technology is developing fast. What is Wi-Fi 6 (802.11ax)? Wi-Fi 6, also known as 802.11ax, is the latest generation and standard for wireless networking that replaces the 802.11ac, or Wi-Fi 5, standard.**

As with any latest Wi-Fi standard, Wi-Fi 6 is potentially better than its predecessors because of modulation and signal processing techniques that promise a more extensive network experience in high-density environments. Wi-Fi 6 uses the same 2.4 gigahertz and 5 GHz bands as 802.11a/g/n/ac but also has the option to use 6 GHz. This is new and different, and when 6 GHz is in play, it's referred to as Wi-Fi 6E. But it's all still 802.11ax.

As with earlier standards, Wi-Fi 6 provides the same basic functionality -- network access via radio technology -- but with potential improvements in capacity, coverage and performance. These benefits are most realized in well-designed wireless local area network (WLAN) environments where client devices also support Wi-Fi 6. This is an important point because older clients, interference and poor design work against Wi-Fi 6 just as they did with earlier standards. Wi-Fi 6 is also half-duplex, shared media technology.

## APPLICATION SCENARIOS



Hotels & Resorts



Apartments & Dormitories



University Campuses



Offices



Commercial Complexes



Restaurants

# ENTERPRISE WI-FI

## Cullinan™ Series Outdoor AP



### GCS-AP-OU-3500-N535

- 2.4G 300Mbps
- 2\*2 MIMO omnidirectional antenna
- Pole type, IP65 shell
- 1\*FE WAN+1\*FE Lan
- Fat and thin all-in-one



### GCS-AP-OU-3500-N595

- 5.8G 300Mbps
- 2\*2 MIMO omnidirectional antenna
- Pole type, IP65 shell
- 1\*FE WAN+1\*FE Lan
- Fat and thin all-in-one



### GCS-AP-OU-3500-AP80

- Outdoor base station AP
- 1200 Gigabit dual-band
- IP67 I aluminum alloy shell
- built-in lightning protection
- coverage radius 200 meters



### GCS-AP-OU-3500-AP20

- Single frequency 300Mbps
- Qualcomm solution
- 2\*2 MIMO omni-directional antenna Covering a radius of 100 meters
- Pole-mounted
- Cast aluminum IP67 housing
- 1\*FE (WAN/LAN) port
- Lightning and surge protection
- Fat and thin all-in-one
- cloud platform/small program management



### GCS-AP-OU-3500-AP50

- Dual band 750Mbps
- Qualcomm solution
- 2\*2 MIMO omni-directional antenna Covering a radius of 100 meters
- Pole-mounted
- Cast aluminum IP67 housing
- 1\*FE (WAN/LAN) port
- Lightning and surge protection
- Fat and thin all-in-one
- cloud platform/small program management



### GCS-AP-OU-3500-AP60

- 1800M 11ax outdoor type
- External antenna
- 1\*GE (WAN) outdoor AP
- Overall rate 1800Mbps
- Fat and thin all-in-one
- Smart antenna
- cloud management & applet management
- WI-FI 6

## Cullinan™ Series Indoor AP



### GCS-AP-CM-3500-A420

- Single-frequency 300Mbps
- 11n ceiling-mounted AP
- fat and thin all-in-one
- 1\*FE (WAN)+1\*FE (LAN)
- cloud platform/small program management



### GCS-AP-CM-3500-A560

- 1200M 11ac indoor type
- Ceiling-mount AP
- fat and thin all-in-one
- 1\*FE (WAN)+1\*FE (LAN)
- cloud platform/small program management



### GCS-AP-CM-3500-A720

- Full gigabit dual-band
- 1167Mbps (300+867)
- high-density coverage 5G
- priority IPv4/IPv6 dual protocol



### GCS-AP-CM-3500-A830

- 1800M 11ax indoor type
- Ceiling-mount AP
- fat and thin all-in-one
- {1\*GE (WAN)+1\*GE (LAN)
- cloud platform/small program management
- WI-FI 6



### GCS-AP-CM-3500-A850

- 3000M 11ax indoor type
- Ceiling-mount AP
- fat and thin all-in-one
- high-speed transmission/low latency
- Mesh networking
- WI-FI 6



### GCS-AP-WM-3500-1200

- 1200M 11AC indoor type
- Uplink 1\*GE electrical port
- Downlink 1\*GE electrical port
- Faceplate panel AP
- fat and thin all-in-one
- Cloud platform/small program management



### GCS-AP-WM-3500-1800

- 1800M 11Ax indoor type
- Support 802.11ax
- Overall rate 1800Mbps
- Fat and thin all-in-one
- Cloud platform/small program management
- WI-FI 6

# Cullinan™ Series Bridge



**GCS-AC-BR-3500-E120**

- 2.4G digital pairing, simple and efficient, free of settings
- Point-to-point
- IP65 waterproof design and exquisite appearance MINI bridge Support centralized management
- Adjustable transmission power
- Elevator dedicated transmission bandwidth 40M- 60M



**GCS-AC-BR-3500-E150**

- 2.4G digital pairing, simple and efficient, free of settings
- Point-to-point
- IP65 waterproof design, elegant appearance, Double network port design
- Support centralized management
- Adjustable transmission power
- Outdoor 1KM transmission bandwidth 50M



**GCS-AC-BR-3500-E450**

- 5.8G digital pairing, simple and efficient, free of settings
- Point-to-point
- IP65 waterproof design, Elegant appearance, double network port design
- Anti-interference, easy to install
- Support centralized management
- Transmission Bandwidth (1KM: 90M/2KM: 65M/2.5KM/40M)



**GCS-AC-BR-3500-E451**

- 5.8G digital pairing, simple and efficient, free of settings
- Point-to-point
- IP65 waterproof design, Elegant appearance Double network port design
- Anti-interference, easy to install
- Support centralized management
- Transmission bandwidth (500 meters: 65M/1KM: 40M)



**GCS-AC-BR-3500-E800**

- 5.8G digital pairing, simple and efficient, free of settings
- Point-to-point
- IP65 waterproof design Elegant appearance Dual network port design
- Transmission bandwidth (1KM: 240M/2KM:130M/3KM/40M)



**GCS-AC-BR-3500-E900**

- 5.8G digital pairing, simple and efficient, free of settings
- Point-to-point
- IP65 waterproof design
- Elegant appearance
- Dual network port design
- Transmission bandwidth (1KM: 280M/2KM: 154M/3KM/70M)

# Cullinan™ Series Router



**GCS-AC-4G-3500-X300**

- Full Network 4G wireless router
- Built-in antenna 2\*4G+2\*Wi-Fi
- Built-in traffic statistics
- Dual SOC design
- Support SSID hiding
- connected terminals:15



**GCS-AC-4G-3500-R100**

- Full Network 4G wireless router
- External antenna (non-removable)
- 2\*4G+2\*Wi-Fi 1WAN+2LAN
- Built-in traffic statistics
- Dual SOC design
- Support SSID hiding
- Connected terminals:15



**GCS-AC-4G-3500-300N**

- Full Network 4G wireless router
- External antenna (non-removable)
- 2\*4G+2\*Wi-Fi
- 1WAN+2LAN
- Built-in traffic statistics
- Dual SOC design
- Support SSID hiding
- Connected terminal: 25



**GCS-AC-4G-3500-R130**

- Full Network 4G wireless router
- External antenna (non-detachable)
- 2\*4G+2\*Wi-Fi 1WAN+3LAN
- Built-in traffic statistics Dual SOC design
- Support SSID hiding
- Connected terminal:20



**GCS-AC-4G-3500-R150**

- All Network industrial 4G wireless router
- Aluminum alloy casing
- External antenna (4G antenna is detachable)
- 2\*4G+2\*Wifi1WAN + 2 \* LAN
- Built-in traffic statistics
- Dual SOC design
- Support SSID hiding
- Connected terminal:15



**GCS-AC-4G-3500-R170**

- 6-antenna full Network 4G wireless router External antenna (not detachable)
- 1WAN+2LAN Built-in traffic statistics
- Dual SOC design
- Support SSID hiding
- Support VPN
- Connected terminal:25



**GCS-AC-4G3500-300K**

- Outdoor waterproof 4G router
- Built-in antenna
- 2\*4G+2\*Wi-Fi
- Supports 24V POE power supply + DC power supply



# Cullinan™ Series Router



**GCS-AC-SW-3500-200S**  
· Gigabit Wi-Fi 5 wireless router



**GCS-AC-SW-3500-800K**  
· Wi-Fi 6 wireless router  
· MESH ad-hoc network

# Cullinan™ Series POE Switches



**GCS-AC-SW-3500-4809**  
· 8 + 2 10/100M POE switch  
· 48V standard PoE power supply



**GCS-AC-SW-3500-809F**  
· 8 + 2 gigabit  
· POE switch  
· 48V standard PoE power supply  
· Total power:120W



**GCS-AC-SW-3500-4816**  
· 2 \* Gigabit uplink port  
· 1 \* Gigabit optical port  
· 16 100M PoE port  
· 48V standard PoE power supply  
· Total power:200W



**GCS-AC-SW-3500-4824**  
· 2 \* Gigabit uplink port  
· 2 \* Gigabit optical port  
· 24 \* 100M PoE port  
· 48V standard PoE power supply  
· Total power:300W



**GCS-AC-SW-3500-824F**  
· 2 \* Gigabit uplink port  
· 2 \* Gigabit optical port  
· 24\* Gigabit PoE port  
· 48V standard PoE power supply  
· Total power:400W

# Cullinan™ Series Gateway Access Controller (AC)



**GCS-AC-PO-3500-W050**  
· 5-port full Gigabit PoE gateway  
· Metal casing  
· 70 terminals with a maximum capacity of 400M bandwidth  
· 5 Gigabit Ethernet ports including 1 WAN port and 4 Gigabit electrical ports  
· Support standard 802.3 af/at.  
· Capacity 60/Manage 16 APs



**GCS-AC-PO-3500-W100**  
· 8-port full Gigabit PoE gateway  
· Aluminum Casing  
· 100 terminals with capacity, maximum support 800M bandwidth.  
· Total: 5 Gigabit Ethernet ports, including 1 WAN port and 8 Gigabit electrical ports  
· Support standard 802.3 af/at  
· Capacity 100/Manage 32 APs



**GCS-AC-EN-3500-G100**  
· 5-port full Gigabit gateway  
· 13-inch metal casing  
· 150 terminals with a maximum capacity of 500M bandwidth  
· Total: 5 Gigabit Ethernet ports, of which 1\*GE (WAN port) + 4\*GE (LAN port, WAN can be switched)  
· Cloud can visualize management



**GCS-AC-EN-3500-G500**  
· 6-port full Gigabit gateway,  
· 1U metal casing  
· 500 terminals with a maximum capacity of 800M bandwidth.  
· Total 6 Gigabit Ethernet ports, including 1\*GE (WAN port) + 5\*GE (LAN port, switchable WAN) + 2\*USB+1\*CONSOLE debugging port  
· Cloud platform/small program management



**GCS-AC-EN-3500-1000**  
· 6-port full Gigabit gateway  
· 1U metal casing  
· 1000 terminals with a maximum capacity of 1000M bandwidth  
· Total 6 Gigabit Ethernet ports, including 1\*GE (WAN port) + 5\*GE (LAN port, switchable WAN) + 2\*USB+1\*CONSOLE debugging port  
· Supporting behavior management, intelligent flow control, VPN, SD-WAN

# INDUSTRIAL WI-FI

## Dresden™ Series Outdoor AP(WI-FI 5)



**GCS-AP5-5012A-MI6**

- Outdoor industrial-grade AP
- Support 802.11a/b/g/n/ac
- 1 Gigabit WAN port, 1 Gigabit LAN port
- Support PoE power supply
- Protection level IP68
- 3 LED lights, 1 reset
- Support 2.4 G&5.8G work at the same time
- MIMO2\*2
- Built-in omnidirectional antenna
- The rate can reach 1167Mbps
- Wide temperature -40 ~ +70℃



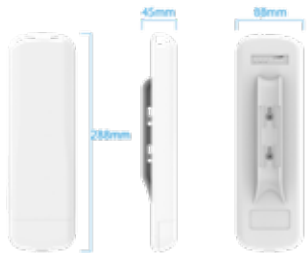
**GCS-AP5-5012A-DI12**

- Outdoor industrial-grade AP
- Support 802.11a/b/g/n/ac
- 1 Gigabit WAN port, 1 Gigabit LAN port
- Support PoE power supply
- Protection level IP68
- 3 LED lights, 1 reset
- Support 2.4 G&5.8G work at the same time
- MIMO2\*2, built-in omnidirectional antenna
- The rate can reach 1167Mbps
- Wide temperature -40 ~ +70℃



**GCS-AP5-5012A-ME8**

- Outdoor industrial-grade AP
- Support 802.11a/b/g/n/ac
- 1 Gigabit WAN port, 1 Gigabit LAN port
- Support PoE power supply
- Protection level IP68
- 3 LED lights, 1 reset
- Support 2.4 G&5.8G work at the same time
- MIMO2\*2, built-in omnidirectional antenna
- The rate can reach 1167Mbps
- Wide temperature -40 ~ +70℃



**GCS-AP4-4001B-D115**

- Outdoor industrial-grade AP
- Support 802.11a/n
- Built-in 5 GHz Antenna 15 dBi
- Dual Slant ±45° Sector
- Horizontal Beamwidth 40° (-3 dB)
- Vertical Beamwidth 15° (-3 dB)
- IP55 Compliant

## Dresden™ Series Outdoor AP (WI-FI 6)



**GCS-AP6-6023A-MI6**

- Outdoor industrial grade Wi-Fi 6
- tri-band AP
- Support 802.11a/b/g/n/ac/ax
- 1X2.5G WAN port, 1X2.5GLAN port
- PoE power supply
- Protection class IP68
- 5 LED lights, 1 reset
- 2.4G&5.8G1&5.8G2
- MU-MIMO4\*4
- Built-in omnidirectional antenna
- Speed up to 6573Mbps
- Wide temperature -40 ~ +70℃.



**GCS-AP6-6022A-MI6**

- Outdoor industrial grade Wi-Fi 6 AP
- Support 802.11a/b/g/n/ac/ax
- 1X 2.5G WAN port, 1X 2.5G LAN port
- PoE power supply
- IP68 protection level
- 3 LED lights, 1 reset
- 2.4G&5.8G
- MU-MIMO2\*2
- Built-in omnidirectional antenna
- Speed up to 1773Mbps
- Wide temperature -40 ~ +70℃.



**GCS-AP6-6022A-DI12**

- Outdoor industrial grade Wi-Fi 6 AP
- Support 802.11a/b/g/n/ac/ax
- 1X2.5G WAN port, 1X2.5G LAN port
- PoE power supply,
- Protection class IP68
- 3 LED lights, 1 reset
- 2.4G&5.8G
- MU-MIMO2\*2
- Built-in directional antenna
- Speed up to 1773Mbps
- Wide temperature -40 ~ +70℃



**GCS-AP6-6022A-ME8**

- Outdoor industrial grade Wi-Fi 6 AP
- Support 802.11a/b/g/n/ac/ax
- 2 2.5G WAN ports
- PoE power supply
- IP68 protection level
- 3 LED lights, 1 reset
- 2.4G&5.8G
- MU -MIMO2\*2
- External omnidirectional antenna
- Rate up to 1773Mbps
- Wide temperature -40 ~ +70℃



**GCS-AP6-6023A-ME8**

- Outdoor industrial grade Wi-Fi 6 tri-band AP
- Support 802.11a/b/g/n/ac/ax
- 1X 2.5G WAN port, 1X 2.5GLAN port
- PoE power supply
- Protection class IP68
- 5 LED lights, 1 reset
- 2.4G&5.8G1&5.8G2
- MU-MIMO4\*4
- External omnidirectional antenna
- Speed up to 6573Mbps
- Wide temperature -40 ~ +70℃

# Dresden™ Series Outdoor Bridge (WI-FI 5)



### GCS-AP5-5011B-DI16

- Industrial-grade Wi-Fi 5 wireless network bridge
- 2 Gigabit electrical ports
- PoE power supply
- Protection class IP68
- Tx distance: 0-3km
- 3 LED lights, 1 reset
- Built-in directional antenna
- MIMO2\*2, rate up to 867Mbps
- Wide temperature- 40 ~ +70℃



### GCS-AP5-5012X-DI16

- Industrial-grade Wi-Fi 5
- Dual-band wireless bridge
- 5.8G remote transmission
- 2.4G coverage
- 2 Gigabit electrical ports(SFP optical port available)
- PoE power supply
- Protection class IP68
- Tx distance: 0-3km
- 3 LED lights
- 1 reset
- Built-in directional antenna
- 5.8MIMO2\*2, rate up to 867Mbps
- 2.4G 300Mbps
- Wide temperature -40 ~ +70℃



### GCS-AP5-5011B-DE17

- Industrial-grade Wi-Fi 5 5.8G
- wireless network bridge
- 2 Gigabit electrical ports
- PoE power supply
- IP68 protection grade
- Tx distance: 0-5km
- 3 LED lights, 1 reset
- External directional antenna
- MIMO2\*2, rate up to 867Mbps
- Wide Temperature -40 ~ +70℃.



### GCS-AP5-5011B-DE29

- Industrial grade Wi-Fi 5
- 5.8G wireless bridge
- 2 Gigabit electrical ports
- PoE power supply
- Protection grade IP68
- Tx distance: 0-20km
- 3 LED lights, 1 reset
- External directional antenna
- MIMO2\*2, speed up to 867Mbps
- Wide temperature -40 ~ +70℃

# Dresden™ Series Outdoor Bridge (WI-FI 6)



### GCS-AP6-6021B-DI16

- Outdoor industrial-grade
- Wi-Fi 6 bridge
- Support 802.11a/b/g/n/ac/ax
- 1X 2.5G WAN port, 1X2.5G Lan port
- PoE power supply
- Protection class IP68
- 3 LED lights, 1 reset
- 5.8G, MU-MIMO2\*2
- Built-in omnidirectional antenna
- Speed up to 1200Mbps
- Wide temperature -40 ~ +70℃



### GCS-AP6-6021B-DE17

- Outdoor industrial-grade
- Wi-Fi 6 bridge
- Support 802.11a/b/g/n/ac/ax
- 1X 2.5G WAN port, 1X2.5G Lan port
- PoE power supply
- Protection class IP68
- 3 LED lights, 1 reset
- 5.8G, MU-MIMO2\*2
- External omnidirectional antenna
- Speed up to 1200Mbps
- Wide temperature -40 ~ +70℃





# Dresden™ Series Indoor AP



### GCS-AP5-5012A-M013 (Wi-Fi 5)

- Dual-band indoor high-performance AP
- Support 802.11a/b/g/n/ac standard and 2x2 MIMO standard
- Maximum transfer rate 867Mbps (5G) & 300Mbps (2.4G)
- Indoor coverage: 0~150m
- Integrated antenna, quick installation
- Support network bridge and routing mode, and realize flexible deployment of network architecture by adjusting the network mode of the device
- Intelligent QoS wireless multimedia optimization technology, giving priority to voice and video transmission stability
- Support dual firmware backup, through the firmware backup mechanism, prevent the device from being unable to work under extreme conditions
- Support webpage management, making the installation and maintenance of equipment more convenient
- Support wireless controller (AC) management, realize remote centralized configuration and upgrade management\*
- Support 802.3at protocol (POE+)  
Protection level up to IP41, suitable for various environments



### GCS-AP6-6012A-V3000 (Wi-Fi 6)

- Better transmission quality and higher transmission rate, the concurrent rate of the whole machine can reach up to 3000Mbps
- It adopts IPQ5018 chip, supports 160Mhz, greatly expands the user capacity, and can support 128 users
- The heat sink adopts buckle structure design and special coating treatment on the surface, and the heat dissipation effect is more ideal
- The radio frequency adopts high-power external FEM, which has stable performance, wide wireless range and farther transmission
- 2.4G WIFI transmission protocol 802.11 b / g / n/ac /ax
- 2.4G working frequency band 2.4GHz - 2.484GHz
- 5G working frequency band 5.150GHz ~ 5.825GHz
- 5G WIFI transmission protocol 802.11 b / g / n/ac /ax
- Built-in antenna 2.4G 2 2.4G antennas, each gain: 4dBi
- Built-in antenna 5G 2 5.8G antennas, each gain: 4dBi
- Maximum rate 2.4G provides a maximum access rate of 574Mbps, and 5G provides a maximum access rate of 2402Mbps
- Interface (WAN) 1 10/100/1000/adaptive WAN port, support POE 48V power supply
- Interface (LAN) 1 Console port
- Measurement: 186mm × 186mm × 37mm



### GCS-AP6-MXW-P642 (Wi-Fi 6)

- High-performance 802.11ax AP
- Support 802.11a/b/g/n/ac/ax
- 2.4G working frequency band 2.4GHz - 2.44GHz
- 5G working frequency band 5.150GHz ~ 5.850GHz
- Built-in antenna 2 .4G antenna\*2, each gain: 3dBi
- Built-in antenna 5G built-in ceramic antenna\*2, each gain: 3dBi
- Maximum rate: 5G: 1200Mbps 2.4G:600M
- 1x10/100/1000M adaptive WAN port, support 48V POE power supply
- Interface (LAN) 4 10/100/1000M adaptive LAN ports  
optional: 3 LAN ports + 1 telephone
- POE: 802.3af
- Maximum power consumption: <14W
- Measurement: 86mm\*86mm\*48mm

# INDUSTRIAL EXPLOSION PROOF WI-FI

## Dresden™ Series Explosion Proof Outdoor AP



### GCS-AP5-EX-811-1F

- Explosion-proof AP
- Explosion-proof grade Exd IIB T6
- Protection grade IP68
- Support 802.11a/b/g/n/ac
- 1 Gigabit WAN port, 1 Gigabit LAN port or 1\* Gigabit SFP
- Support PoE power supply
- Support 2.4G&5.8G working at the same time MIMO2\*2
- External 2\* omnidirectional antenna
- Speed up to 1167Mbps
- Wide temperature -40 ~ +80℃



### GCS-AP5-EX-911-1F

- Explosion-proof AP
- Explosion-proof grade Exd IIC T6
- Protection grade IP68
- Support 802.11a/b/g/n/ac
- 1 Gigabit WAN port, 1 Gigabit LAN port or 1\* Gigabit SFP, support
- PoE power supply
- Support 2.4G&5.8G working at the same time, MIMO2\*2
- External 2\*omnidirectional antenna
- Speed up to 1167Mbps
- Wide temperature -40 ~ +80℃



### GCS-AP5-EX-821-1F

- Explosion-proof WI-FI 6 AP
- Explosion-proof grade Exd IIB T6
- Protection grade IP68
- Support 802.11a/b/g/n/ac/ax
- 1X 2.5G WAN port, 1X2.5G LAN port or 1\*2.5G SFP
- Support PoE Power supply
- Support 2.4G&5.8G working at the same time, MIMO2\*2
- External 2\* omnidirectional antenna
- Speed up to 1773Mbps
- Wide temperature -40 ~ +80℃



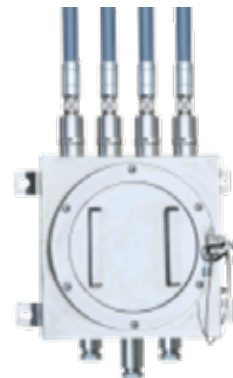
### GCS-AP5-EX-C921-1F

- Explosion-proof WI-FI 6 AP
- Explosion-proof grade Exd IIC T6
- Protection grade IP68
- Support 802.11a/b/g/n/ac/ax
- 1X 2.5G WAN port, 1X2.5G LAN port or 1\*2.5G SFP
- Support PoE Power supply
- Support 2.4G&5.8G working at the same time
- MIMO2\*2
- External 2\* omnidirectional antenna
- Speed up to 1773Mbps
- Wide temperature -40 ~ +80℃



### GCS-AP5-EX-821-1FV2

- Explosion-proof WI-FI 6 tri-band AP
- Explosion-proof grade Exd IIB T6
- Protection grade IP68
- Support 802.11a/b/g/n/ac/ax
- 1X 2.5G WAN port, 1X2.5G LAN port or 1\*2.5G SFP, Support
- PoE power supply
- Support 2.4G&5.8G working at the same time, MIMO2\*2
- External 6\* omnidirectional antenna
- Speed up to 6573Mbps
- Wide temperature -40 ~ +80℃



### GCS-AP5-EX-921-1FV2

- Explosion-proof WIFI6 tri-band AP
- Explosion-proof grade Exd IIC T6
- Protection grade IP68
- Support 802.11a/b/g/n/ac/ax
- 1X 2.5G WAN port
- Support PoE power supply
- Support 2.4G&5.8G simultaneous work
- MIMO2 \*2
- External 6\* omnidirectional antennas
- The rate can reach 6573Mbps
- Wide temperature range is -40 ~ +80℃

# Dresden™ Series

## Explosion Proof Outdoor Bridge



### GCS-AP5B-EX-811-2P

- Explosion-proof WiFi5 wireless network bridge
- Dual firmware backup
- Explosion-proof grade Exd IIB T6
- 1 Gigabit WAN port, 1 Gigabit LAN port
- PoE power supply
- Protection grade IP68
- Tx distance: 0~3km
- 2 external antenna connectors
- MIMO2\* 2
- Speed can reach 867Mbps
- Wide temperature range is -40 ~ +80℃



### GCS-AP5B-EX-811-2P

- Explosion-proof WiFi5 wireless network bridge
- Dual firmware backup
- Explosion-proof grade Exd IICT6
- 1 Gigabit WAN port, 1 Gigabit LAN port
- PoE power supply
- Protection grade IP68
- Tx distance: 0~3km
- 2 external antenna connectors
- MIMO2\*2
- Rate can reach 867Mbps
- Wide temperature range is -40 ~ +80℃



### GCS-AP6B-EX-821-2P

- Explosion-proof WiFi6 wireless network bridge
- Dual firmware backup
- Explosion-proof grade Exd IIB T6
- 1X 2.5G WAN port, 1X2.5G LAN port or 1\*2.5G SFP
- PoE power supply
- Protection grade IP68
- Tx distance: 0~3km
- External 4 Antenna connector
- MIMO4\*4
- Rate up to 4800Mbps
- Wide temperature -40 ~ +80℃



### GCS-AP6B-EX-921-2P

- Explosion-proof WiFi6 wireless network bridge
- Dual firmware backup
- Explosion-proof grade Exd IIC T6
- 1X2.5G WAN port, 1X2.5G LAN port or 1\*2.5G SFP
- PoE power supply
- Protection grade IP68
- Tx distance: 0~3km
- External 4 Antenna connector
- MIMO4\*4
- Rate up to 4800Mbps
- Wide temperature -40 ~ +80℃

# Dresden™ Series Industrial Gateway

## Access Controller (AC)



### GCS-IN-AC-94A0-06

- Standard 1U rack wireless controller
- 1 Console management port
- 6 Gigabit ports
- 2 USB 2.0 ports
- Support the management of a maximum of 2048 APs, Maximum number of user names can reach 65K. (default includes 64 authorizations), Optional over-authorization on request



### GCS-IN-AC-44A0-05

- Desktop wireless controller
- 1 CONSOLE management port
- 5 Gigabit ports
- 1 USB 2.0 interface
- Supports the management of a maximum of 256 APs, Maximum number of user names can reach 8K, (including 32 authorizations by default)



# Nassak™ Series Industrial Switches



## GSC-IN-SW-400-008SM

- Managed industrial grade
- 2 Gigabit SFP optical ports + 8 10M/100M/1000M adaptive electrical ports
- Light network management
- Working temperature range (–40° C–85° C)
- Power supply range (dual DC12–58V), default is notIncluding power adapter
- DIN rail installation, protection level: IP40



## GSC-IN-SW-400-0004M

- Managed industrial grade
- 2 Gigabit SFP optical ports + 4 10M/100M/1000M adaptive electrical ports
- Layer 2 network management
- Working temperature range (–40° C–85° C)
- Power supply range (dual DC12–58V) default Power adapter not included
- DIN–rail installation
- Protection grade: IP40



## GSC-IN-SW-400-009SM

- Managed industrial grade
- 2 Gigabit SFP optical ports + 8 10M/100M/1000M adaptive electrical ports
- Layer 2 network management
- Working temperature range (–40° C–85° C)
- Power supply range (dual DC12–58V) default Power adapter not included
- DIN–rail installation
- Protection grade: IP40



## GSC-IN-SW-400-2016M

- Management type: Industrial grade
- 2 Gigabit SFP optical ports + 16 10M/100M/1000M self-adaptive electrical ports
- Layer 2 network management type
- Working temperature range (–40° C–85° C)
- Power supply range (dual DC12–58V) default Power adapter not included
- DIN–rail installation
- Protection grade: IP40



## GSC-IN-SW-400-008M

- Managed industrial grade
- 4 Gigabit SFP optical ports + 8 10M/100M/1000M adaptive electrical ports
- Layer 2 network management
- Working temperature range (–40° C–85° C)
- Power supply range (dual DC12–58V) default Power adapter not included
- DIN–rail installation
- Protection grade: IP40



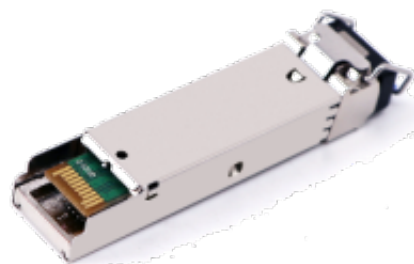
## GSC-IN-SW-400-024M

- Managed industrial grade
- 4 Gigabit SFP optical ports multiplexing 4 Gigabit electrical ports + 24 10M/100M/1000M self-adaptive electrical ports
- Layer 2 network management type
- Working temperature range (–40° C–85° C)
- Power supply Range (AC100–240V, DC36–72V) does not include power adapter by default
- Rack–mounted installation
- Protection level: IP40



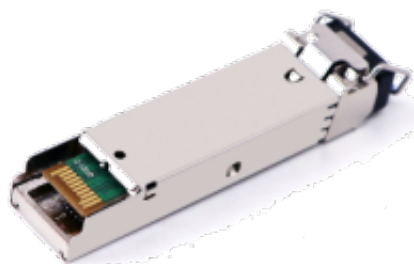
# Nassak™ Series

## Industrial Fiber Switch and Accessories



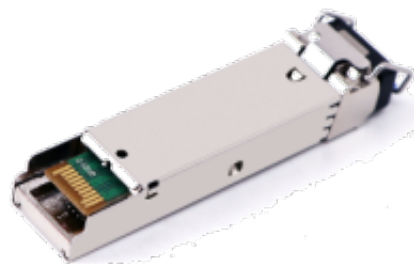
**GCS-FTM-GESX-MM850**  
**1.25G Multimode Dual Fiber SFP**

- Fiber type: MMF
- Interface: LC duplex
- Transmission rate: 1.25Gbps
- Transmission distance: 550M;
- Protocol: IEEE802.3z, SFF-8472, SFP MSA;
- Working temperature: -40~85°C



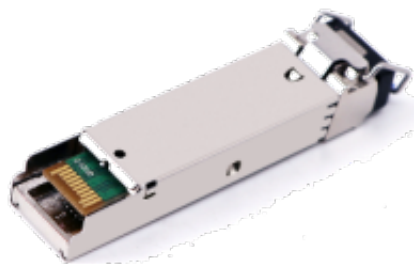
**GCS-FTM-LXSM-1310**  
**1.25G Single mode Dual Fiber SFP**

- Fiber type: SMF
- Interface: LC duplex
- Transmission rate: 1.25Gbps
- Transmission distance: 0~120KM optional
- Protocol: IEEE802.3z, SFF-8472, SFP MSA
- Working temperature: -40~85°C



**GCS-FTM-000M-M850**  
**10G Multimode Dual Fiber SFP**

- Fiber type: MMF
- Interface: LC duplex
- Transmission rate: 10Gbps
- Transmission distance: 300M
- Protocol: IEEE802.3z, SFF-8472, SFP+ MSA
- Working temperature: -40~85°C



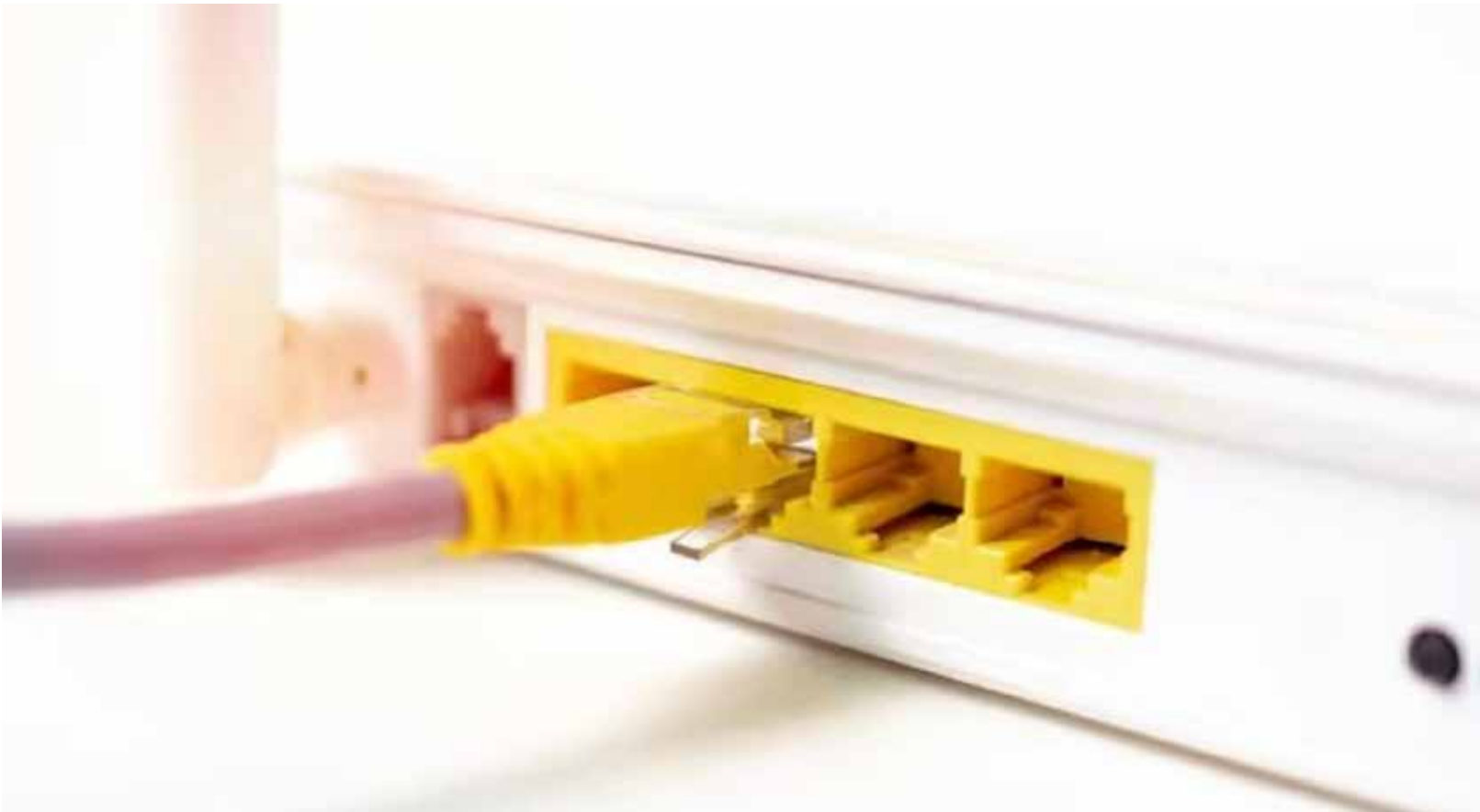
**GCS-FTM-LXSM-1310**  
**10G Single mode Dual Fiber SFP**

- Fiber type: SMF
- Interface: LC duplex
- Transmission rate: 10Gbps
- Transmission distance: 0~80KM optional
- Protocol: IEEE802.3z, SFF-8472, SFP+ MSA
- Working temperature: -40~85°C



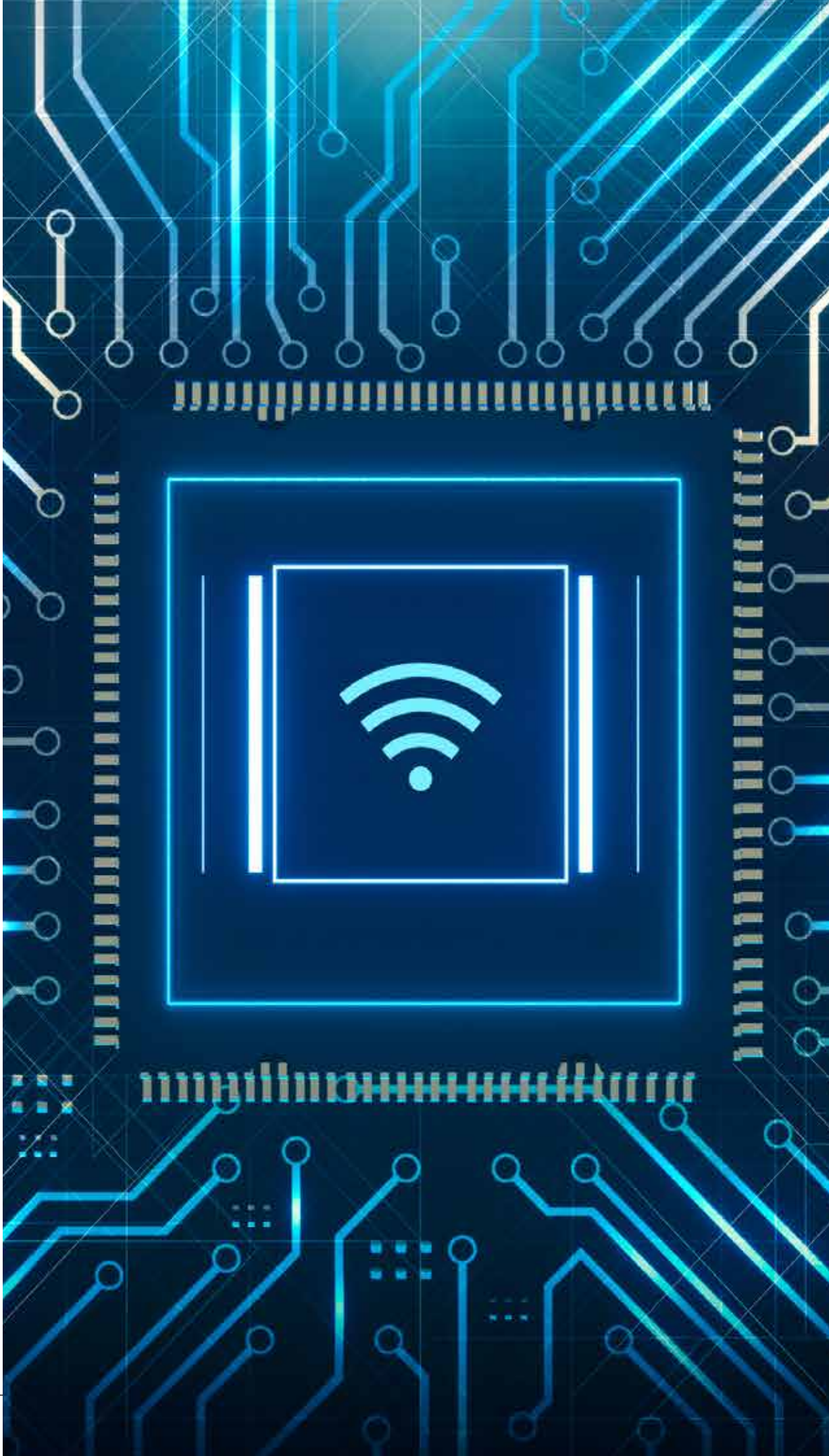
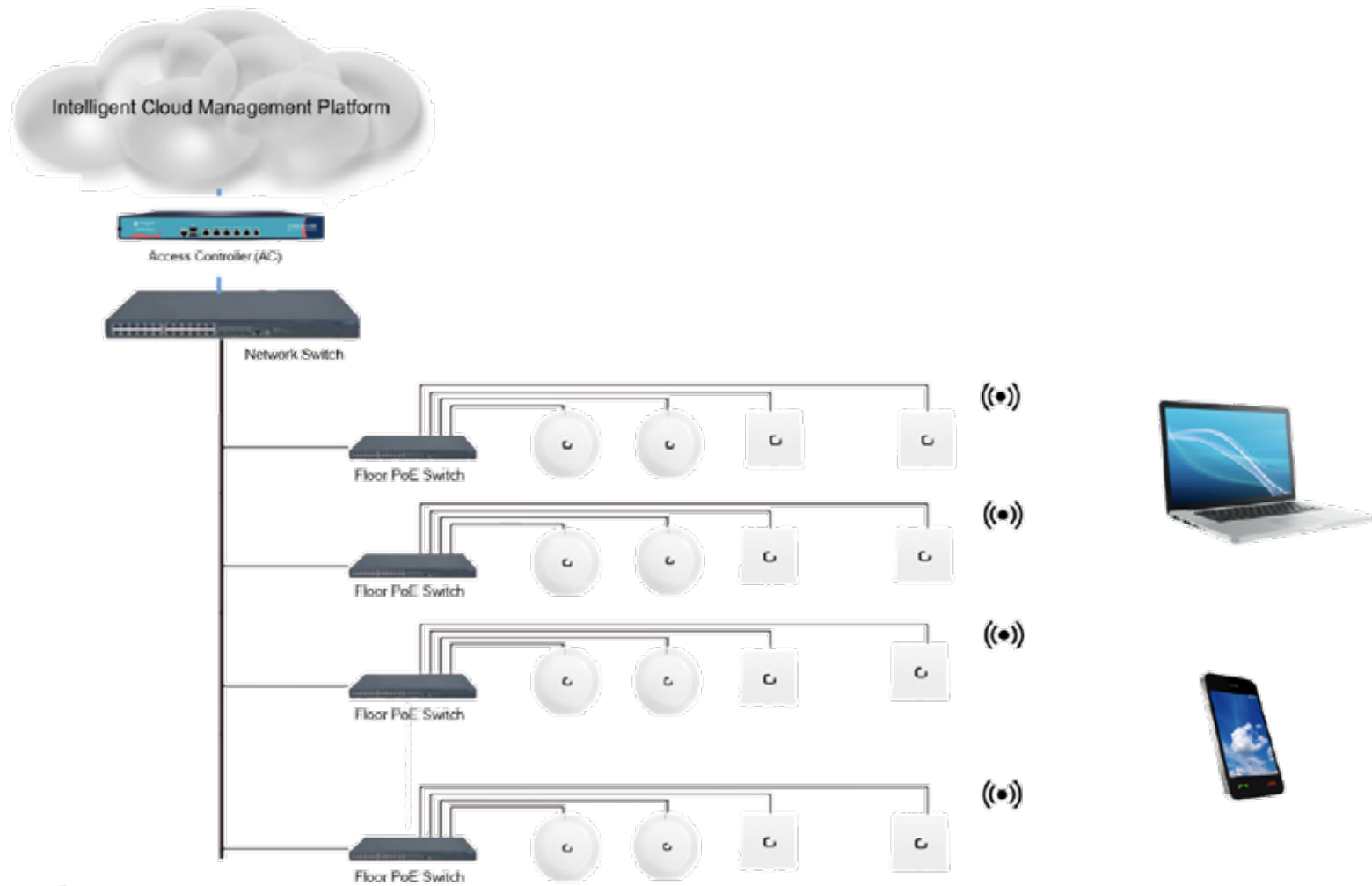
**GCS-FSW-G416-08RM**  
**Managed Industrial Fiber switch**

- Managed industrial fiber switch
- 4 x10 Gigabit optical WAN port
- 16 x Gigabit optical LAN port
- 8 x combo LAN ports
- Layer 3 network management
- Working temperature range (-40° C~75° C)
- Working voltage DC36~72V/AC100~240V 50 ~60HZ
- default does not include a power adapter
- Rack-mounted installation
- Protection level: IP40.





# Building Wi-Fi Network Configuration



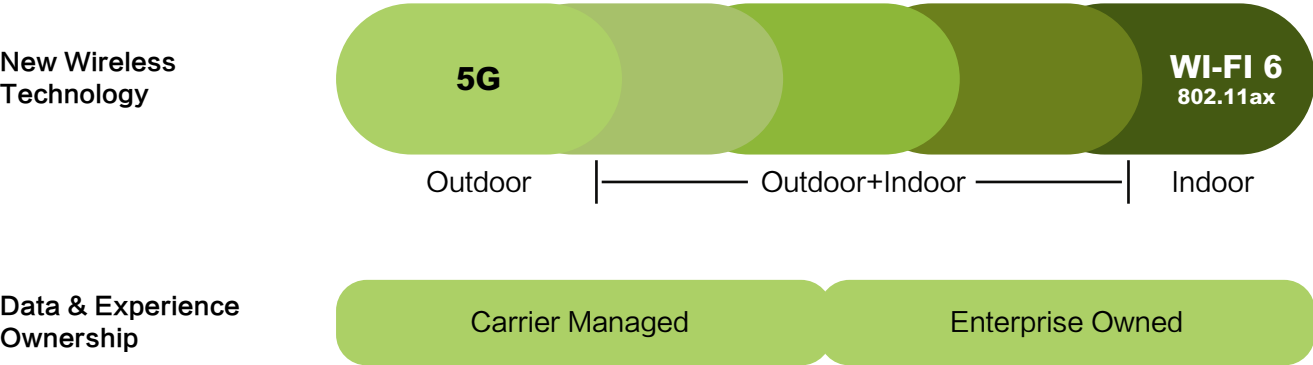


# Comparing Wi-Fi 5 and Wi-Fi 6 Standards

COMPARING WI-FI 5 AND WI-FI 6 STANDARDS		
Parameter	Wi-Fi 5 802.11ac	Wi-Fi-6 802.11ax
Frequency	5 GHz	2.4 and 5.0 GHz
Bandwidth(Channels)	20,40,80+80, 160 MHz	20,40,80+80, 160 MHz
Access	OFDM	OFDMA
Antennas	MU-MIMO(4 x 4)	MU-MIMO(8 x 8)
Modulation	256QAM	1024QAM
Maximum Data Rate	3.5Gb/s	9.6Gb/s
Maximum User/AP	4	8

## 5G Versus Wi-Fi 6

5G and Wi-Fi 6 are complimentary, but Wi-Fi 6 will continue to be preferred & primary wireless access in the enterprise.



01

02

Higher data rates

03

Improved security

04

Improved power efficiency

05

Performance in environments with many connected devices

06

Beam focused on speed and dependability

07

8 x 8 spatial streams for concurrent usage

**BENEFIT FOR HOSPITALITY INDUSTRIES**

- Provide instant connectivity anytime, anywhere
- Promotes guests loyalty
- Enhance guests browsing experience
- Enable digital transformation to drive new services
- Automate network and improve staff efficiency

**BENEFIT FOR OFFICES**

- Mobility in office
- Increased collaboration
- Simpler infrastructure
- Better customer engagement
- Improve office efficiency
- Enhance profits

**BENEFIT FOR MOBILE DATA OFFLOAD APPLICATIONS**

- Reduce CAPEX
- Reduce OPEX
- Rapid deployment
- High scalability
- Excellent coverage

**BENEFIT FOR ENTERPRISES**

- Increase customer satisfaction
- Promote productivity
- Boost employee satisfaction
- Improve profits
- Speed up digital transformation

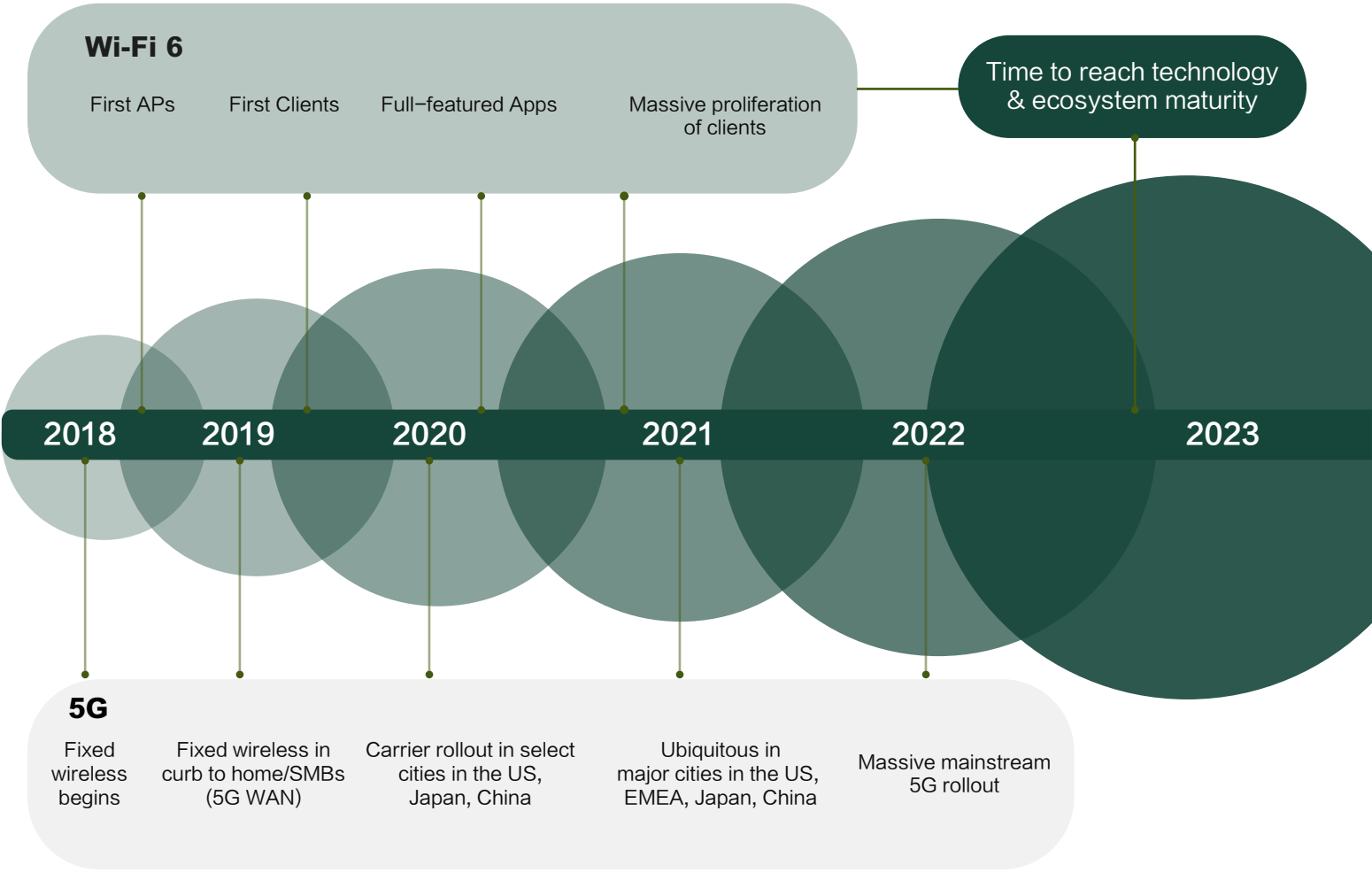
**BENEFIT FOR HOMES**

- Online communication
- Flexibility
- Cost saving
- Work from home
- Secure connection
- Reliable connectivity

**BENEFIT FOR INDUSTRIAL APPLICATIONS**

- Cost saving
- Reliability
- Security
- Fast roaming
- Always connected
- Better and prompt coverage

**Perfect Time to Implement Wi-Fi 6 Now**





## ABOUT US

GUEST CONTROL SYSTEMS LIMITED was founded on a vision to innovate unique emerging technology solutions for the vertical Industry. GUEST CONTROL SYSTEMS LIMITED brings to its position as an advance solutions design and development company a rich heritage of innovation and technological advancement.

Today, GUEST CONTROL SYSTEMS LIMITED has moved well beyond the role of traditional solution development and has been focusing on creating total vertical industry applications and solutions that can help the vertical industry to reduce their capital expenditure, operation expenditure while improving their revenue. The result is a unique market niche highlighting the company's ability to offer its portfolio of applications and solutions at lower cost, increased reliability with value added advantages.

GUEST CONTROL SYSTEMS LIMITED solutions are at works in thousands of vertical enterprises extended across the globes including those prestigious fortune 500 companies. It is this level of experience and performance that has positioned the company in a place of prominence as it continues to expand its solutions portfolio to meet the challenging vertical industry market needs.





## CUSTOMIZATION SERVICES

We live in a world where everyone wants it “their way,” and people expect businesses to deliver custom options. Today’ s customers expect the ability to customize anything and everything to fit their individual preferences.

At Guest Control Systems Limited, our uniqueness and market differentiation is we provide services to enable customer to customize your wireless network and its applications according to your needs and preferences. Wireless network is an essential element in delivering tailored customer experiences to different segments of users. It is the key to driving customer loyalty and increasing customer satisfaction.

**Guest Control Systems Limited provides wireless network customization in the form of comprehensive site survey, network system design, implementation, network monitoring and acceptance and any other options to make a more unique solution rather than the standard mass produce product components.**

We also provide integration services to integrate the wireless network with other technology sub-system to form a unique solution to meet the individual customer specialize application.

## OUR COMMITTMENT

Guest Control Systems Limited is committed to deliver innovative state-of-the-art home & vertical industries wireless technology to customers all over the world.

With the company team expertise and accumulated global experience in wireless technology, we are able to set standard for home & vertical industries products and solutions.

We create lead in innovation to ensure the customers are at the forefront of technology. We ensure your homes and organizations are at world-class status while we care for your service optimization, process efficiency, deliver outstanding customers’ experience, customers” loyalty and organizations profitability.